



FIELD FTP Server Information

For a reliable means of transferring files that are too large for email FIELD has an FTP Server where clients can upload and download files at their leisure. The following details are required when connecting to our server via a web browser like Internet Explorer.

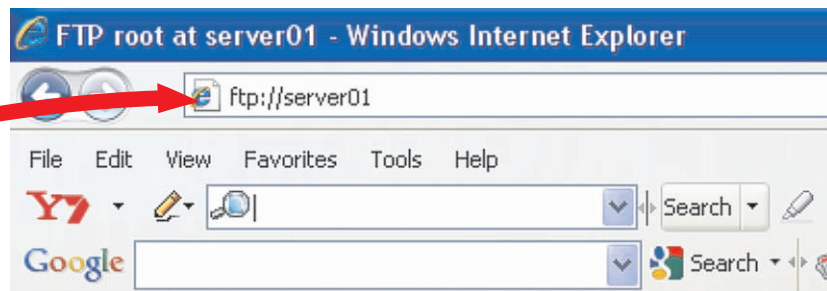
 **ADDRESS:** ftp://server01

 **USER NAME:** fieldsigns

 **PASSWORD:** signs2010 (*this is case sensitise*)

①

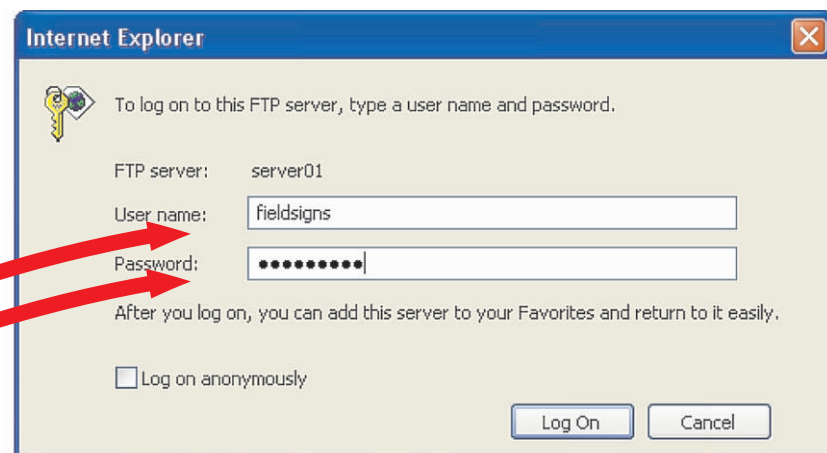
Enter ftp address here



②

Enter user name here

Enter password here





Once a connection is established you may drag and drop files to the FTP server from you desktop or other folders as you wish.

If you are using FTP software you may require additional information please see below for these additional details.

PLEASE NOTE: Mac users may have difficulty using the FTP server and may have to use a specialised FTP software application to upload files.

A free FTP client software can be downloaded from www.filezilla-project.org

ADDITIONAL DETAILS IF USING FTP SOFTWARE

 **IP ADDRESS:** 210.48.29.123  **PORT:** 21

